

ink

align™

MEDICAL TATTOOING

3ML • SINGLE SERVICE
STERILE BLACK TATTOO INK
www.Qfix.com

STERILE R



DROPPING TECHNIQUE



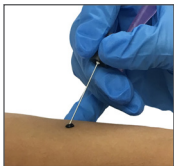
1. Verify that Ink Align dropper is sealed and unopened. Shake very well.



2. Twist off cap and remove heat seal.



3. Hold Ink Align dropper between thumb and index finger. Over trash receptacle, squeeze to produce ink drops.



4. Gently insert desired needle point (lumen) under skin surface. Carefully squeeze dropper, dripping ink onto needle tip. Twist needle and remove.



5. Discard needle in sharps container and Ink Align in normal trash.

*For a slightly larger tattoo, use large diameter needle.

