



positioning
patients for life.®

Access™ Prone VacQfix™ Cushions

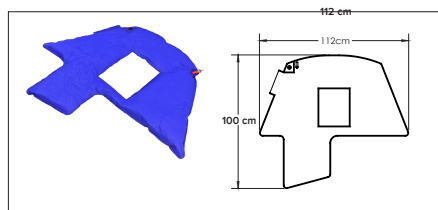
Secures and immobilizes the patient in a comfortable position



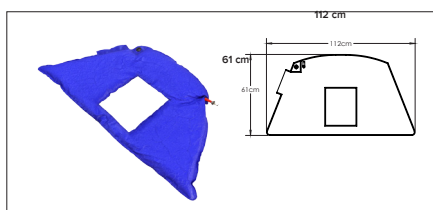
Shown with
RT-4517-PB1
with breast support



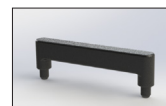
Shown with
RT-4517-PB2
without breast support



RT-4517-PB1
Access Prone VacQfix Cushion
with contralateral breast support



RT-4517-PB2
Access Prone VacQfix Cushion
without contralateral breast support



RT-4544KV-IND
Prone VacQfix
Indexer

Access™ Prone VacQfix™ Cushions provide a comfortable and reproducible patient position for prone breast radiotherapy treatments. The easy to use vacuum cushions effectively immobilize the treatment areas by reducing rotational movements and the potential for daily setup errors.

The Prone VacQfix Indexer locates into any one of the dual hand grip positions to provide accurate indexing and daily reproducibility of the cushion to the Access Prone and Access 360™ Prone Breast simulation and treatment devices.

- Reproducible
- Comfortable
- Reusable
- Easy to Use

